

Specifications

Wafer

備注 (Remark)

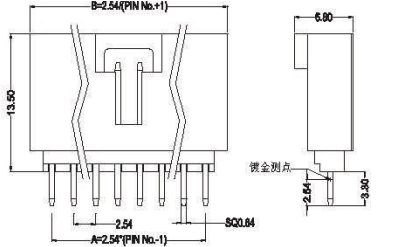
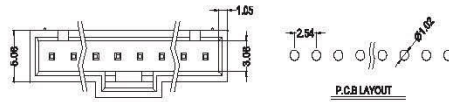
1. 材料 (Material)

膠芯: PA66 UL94V-0

Housing: PA66 UL94V-0

端子: 黃銅

Contact: Brass



WTB2540-PV2-XX

Poles	Dimensions (mm)			Poles	Dimensions (mm)		
	A	B	C		A	B	C
2	2.54	7.62	5.59	14	33.02	38.10	36.07
3	5.08	10.16	8.13	15	35.56	40.64	38.61
4	7.62	12.70	10.67	16	38.10	43.18	41.15
5	10.16	15.24	13.21	17	40.64	45.72	43.69
6	12.70	17.78	15.75	18	43.18	48.26	46.23
7	15.24	20.32	18.29	19	45.72	50.80	48.77
8	17.78	22.86	20.83	20	48.26	53.34	51.31
9	20.32	25.40	23.37	21	50.80	55.88	53.85
10	22.86	27.94	25.91	22	53.34	58.42	56.39
11	25.40	30.48	28.45	23	55.88	60.96	58.93
12	27.94	33.02	30.99	24	58.42	63.50	61.48
13	30.48	35.56	33.53	25	60.96	66.04	64.01

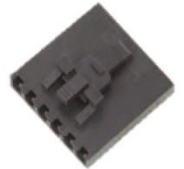
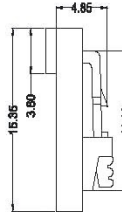
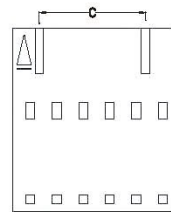
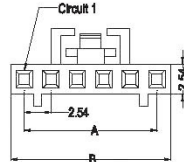
Housing

備注 (Remark)

1. 材料 (Material)

膠芯: PA66 UL94V-0

Housing: PA66 UL94V-0



WTH2540-PV2-XX

Poles	Dimensions (mm)		
	A	B	C
2	2.54	5.08	--
3	5.08	7.62	2.54
4	7.62	10.16	5.08
5	10.16	12.70	7.62
6	12.70	15.24	10.16
7	15.24	17.78	12.70
8	17.78	20.32	15.24
9	20.32	22.86	17.78
10	22.86	25.40	20.32
11	25.40	27.94	22.86
12	27.94	30.48	25.40
13	30.48	33.02	27.94
14	33.02	35.56	30.48
15	35.56	38.10	33.02
16	38.10	40.64	35.56
17	40.64	43.18	38.10
18	43.18	45.72	40.64
19	45.72	48.26	43.18
20	48.26	50.80	45.72

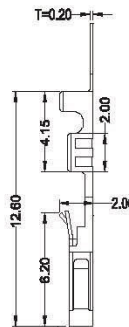
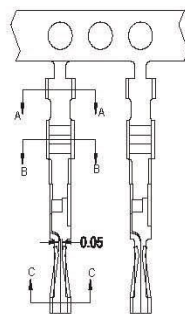
Terminal

備注 (Remark)

1. 材料 (Material)

端子: 磷青銅/黃銅

Contact: Phosphor bronze/Brass



WTT2540-PV2